

643_R

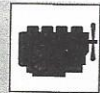
Teleskopkran
Telescopic Crane



40 t



44 m



135 kW/184 HP



MAX CAB

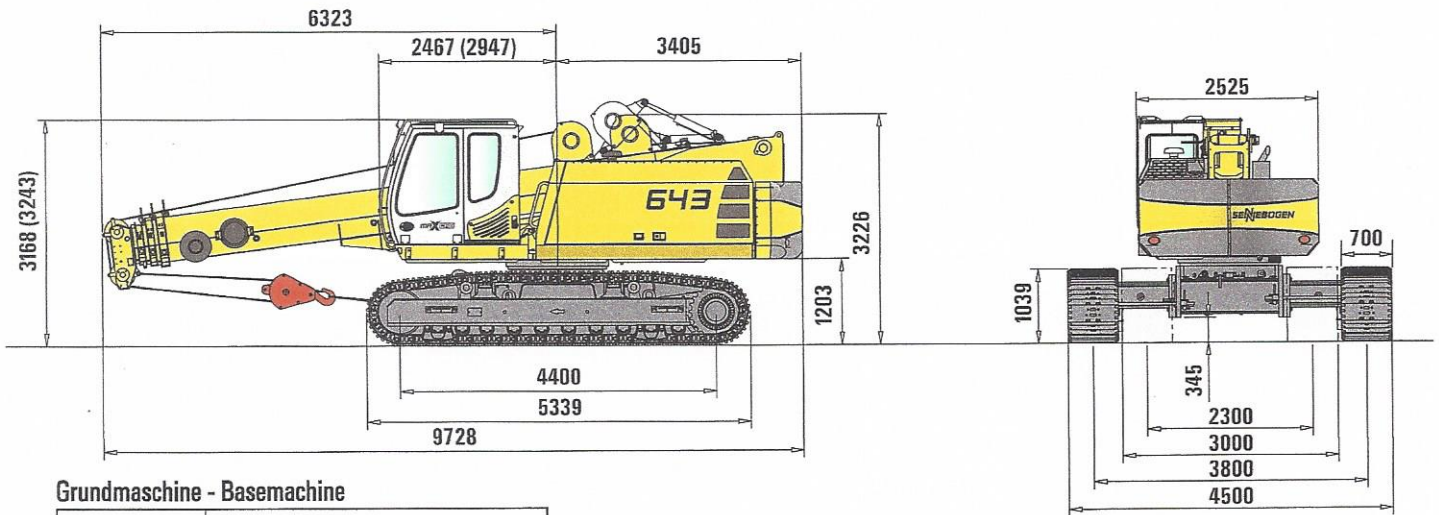


SENNIBOGEN[®]

Maße / Dimensions



9-30 m



Grundmaschine - Basemachine

Bodenplatten Shoe width	Min. Transportbreite Min. Transport width
700 mm	3000 mm
800 mm	3300 mm
900 mm	3400 mm

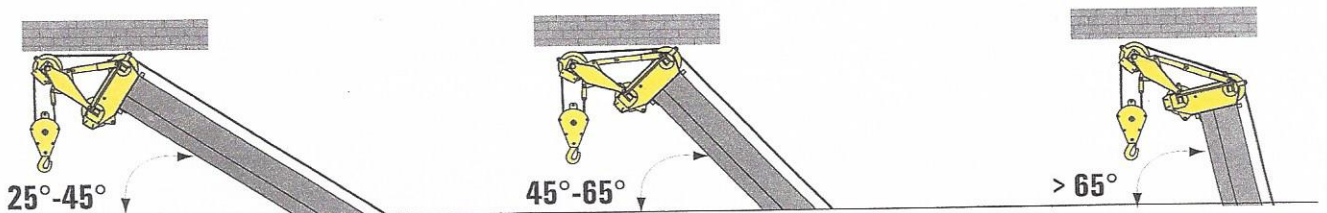
Die Werte in Klammern gelten für hochfahrbare Kabine D200V.
Dimensions in brackets are valid for height-adjustable cab D200V.



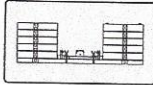
Kapazität Capacity	Gewicht Weight	Seileinsicherung und max. Traglast - No. of hoist reeving and max. rated load									
		9	8	7	6	5	4	3	2	1	
32 t 4-Rollen	300 kg	32.000 kg	28.000 kg	24.500 kg	21.000 kg	17.500 kg	14.000 kg	10.500 kg	7.000 kg	3.500 kg	
20 t 3-Rollen	220 kg				20.000 kg	17.500 kg	14.000 kg	10.500 kg	7.000 kg	3.500 kg	
4 t	40 kg									3.500 kg	



6 t



Ausleger / Boom

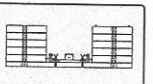


7 t + 4 t



9-30 m

Ausladung / Radius [m]	Auslegerlänge / Boom length [m]													
	9,0		12,5		16,0		19,5		23,0		26,5		30,0	
2,0	40,0*	40,0*												
3,0	35,0	33,0												
4,0	30,2	20,2	20,0	20,0	15,0	15,0	14,0	14,0	11,0	11,0	8,9	8,9	5,0	5,0
5,0	25,5	14,2	20,0	14,0	15,0	13,9	13,3	13,3	11,0	11,0	8,6	8,6	5,0	5,0
6,0	18,6	10,7	18,5	10,5	14,9	10,5	12,0	10,9	10,3	10,3	8,3	8,3	5,0	5,0
7,0	12,2/6,2m	10,2/6,2m	14,3	8,3	13,2	8,2	10,9	8,6	9,5	8,9	7,8	7,8	5,0	5,0
8,0			11,5	6,7	11,4	6,6	9,8	7,0	8,7	7,3	7,4	7,4	5,0	5,0
9,0			9,5	5,5	9,4	5,4	9,0	5,8	7,9	6,1	6,9	6,2	5,0	5,0
10,0			7,5/9,6m	4,9/9,6m	8,0	4,5	8,3	4,9	7,1	5,1	6,4	5,3	5,0	5,0
11,0					6,8	3,7	7,2	4,1	6,5	4,4	5,9	4,5	5,0	4,7
12,0					5,9	3,1	6,2	3,5	5,9	3,7	5,5	3,9	5,0	4,1
13,0					5,0	2,6	5,4	3,0	5,5	3,2	5,1	3,4	4,7	3,5
14,0							4,8	2,6	5,0	2,8	4,8	3,0	4,4	3,1
15,0							4,2	2,2	4,5	2,4	4,5	2,6	4,1	2,7
16,0							3,7	1,9	4,0	2,1	4,2	2,3	3,8	2,4
17,0							3,5/16,6m	1,7/16,6m	3,6	1,8	3,7	2,0	3,6	2,1
18,0									3,2	1,6	3,4	1,7	3,3	1,9
19,0									2,9	1,3	3,0	1,5	3,1	1,6
20,0									2,6	1,1	2,7	1,3	2,9	1,4
21,0									2,5/20,1m	1,1/20,1m	2,5	1,1	2,6	1,3
22,0											2,2	1,0	2,4	1,1
23,0											1,9/23,6m	0,7/23,6m	2,2	0,9
24,0													2,0	0,8
25,0													1,8	0,7
26,0													1,6	0,6
27,0	Spur 3800 Tab.Nr.: 643R-30.0/75/1977/7.0/08.06													
28,0	Spur 2300 Tab.Nr.: 643R-30.0/75/1227/7.0/08.06													
Strangzahl / Parts reeving	10	10	6	6	5	5	4	4	4	4	3	3	2	2
I	0%		50%		100%		100%		100%		100%		100%	
II	0%		0%		0%		25%		50%		75%		100%	
III	0%		0%		0%		25%		50%		75%		100%	



7 t + 4 t



Ausladung / Radius [m]	Auslegerlänge / Boom length [m]													
	9,0		12,5		16,0		19,5		23,0		26,5		30,0	
2,0														
3,0	6,0	6,0	6,0	6,0	6,0	6,0	6,0	6,0	6,0	6,0	6,0	6,0	5,0/3,5m	5,0/3,5m
4,0	6,0	6,0	6,0	6,0	6,0	6,0	6,0	6,0	6,0	6,0	6,0	6,0	5,0	5,0
5,0	6,0	6,0	6,0	6,0	6,0	6,0	6,0	6,0	6,0	6,0	6,0	6,0	5,0	5,0
6,0	6,0	6,0	6,0	6,0	6,0	6,0	6,0	6,0	6,0	6,0	6,0	6,0	5,0	5,0
7,0	6,0/6,7m	6,0/6,7m	6,0	6,0	6,0	6,0	6,0	6,0	6,0	6,0	6,0	6,0	5,0	5,0
8,0			6,0	6,0	6,0	6,0	6,0	6,0	6,0	6,0	6,0	6,0	5,0	5,0
9,0			6,0	5,4	6,0	5,3	6,0	5,7	6,0	6,0	6,0	6,0	5,0	5,0
10,0			6,0	4,4	6,0	4,4	6,0	4,8	6,0	5,0	6,0	5,2	5,0	4,9
11,0			6,0/10,2m	4,2/10,2m	6,0	3,6	6,0	4,0	6,0	4,3	5,8	4,4	5,0	4,6
12,0					5,8	3,0	6,0	3,4	5,8	3,6	5,4	3,8	4,9	4,0
13,0					4,9	2,5	5,3	2,9	5,4	3,1	5,0	3,3	4,6	3,4
14,0					4,3/13,7m	2,1/13,7m	4,7	2,5	4,9	2,7	4,7	2,9	4,3	3,0
15,0							4,1	2,1	4,4	2,3	4,4	2,5	4,0	2,6
16,0							3,6	1,8	3,9	2,0	4,1	2,2	3,7	2,3
17,0							3,1	1,5	3,5	1,7	3,6	1,9	3,5	2,0
18,0							3,0/17,2m	1,4/17,2m	3,1	1,5	3,3	1,6	3,2	1,8
19,0									2,8	1,2	2,9	1,4	3,0	1,5
20,0									2,5	1,0	2,6	1,2	2,8	1,3
21,0									2,2/20,7m	0,8/20,7m	2,4	1,0	2,5	1,2
22,0											2,1	0,9	2,3	1,0
23,0											1,8	0,7	2,1	0,8
24,0											1,7/24,2m	0,6/24,2m	1,9	0,7
25,0													1,7	0,6
26,0													1,5	0,5
27,0	Spur 3800 Tab.Nr.: 643R-30.0/75/1977/7.0/08.06 S													
28,0	Spur 2300 Tab.Nr.: 643R-30.0/75/1227/7.0/08.06 S													
Strangzahl / Parts reeving	2	2	2	2	2	2	2	2	2	2	2	2	2	2
I	0%		50%		100%		100%		100%		100%		100%	
II	0%		0%		0%		25%		50%		75%		100%	
III	0%		0%		0%		25%		50%		75%		100%	

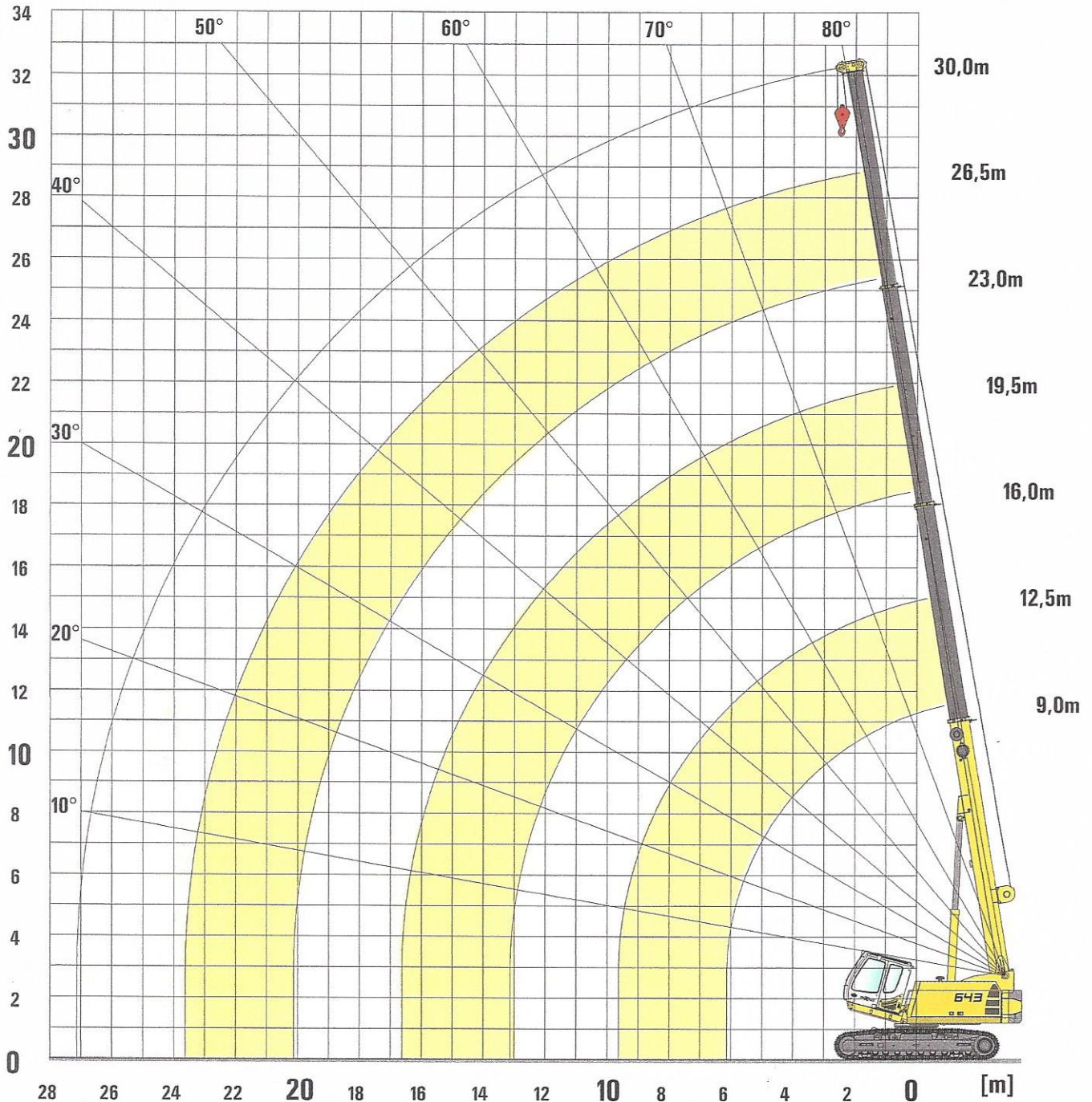
Bei angebautem Spitzenausleger am Grundkörper müssen die Traglastwerte reduziert werden
When the jib is mounted at the basic mainboom the rated loads have to be reduced:

Länge Hauptausleger Main boom length	[m]	9,0	12,5	16,0	19,5	23,0	26,5	30,0
Traglastreduzierung Reduction of load	[kg]	570	420	330	280	240	210	180

Ausleger / Boom



9-30 m



Anmerkung:

- Die angegebenen Traglastwerte gelten für ebenen und festen Stand der Maschine
- Die Traglastwerte sind in Tonnen angegeben und gelten für 360° Schwenkwinkel
- Die Traglastwerte berücksichtigen die Normen DIN 15019.2, ISO 4305 sowie die Kippwinkelmethode (5°)
- Das Gewicht der Lastaufnahmemittel (Haken, Gehänge) ist von den Traglasten abzuziehen
- Die Traglastwerte "Spur 3800" gelten für die maximale Unterwagenspurbreite 3800mm
Die Traglastwerte "Spur 2300" gelten für die minimale Unterwagenspurbreite
- Lastwerte müssen begrenzt oder vermindert werden, um ungünstige Bedingungen zu berücksichtigen, wie weichen oder unebenen Boden, schräge Gefälle, Wind, Seitenlasten, schwingende Lasten, Rucken oder plötzliches Stoppen der Ladungen, Unerfahrenheit des Personals, Fahren mit Last
- Zulässiger Seilzug je Strang bei Kranbetrieb ist bei 14 mm Seildurchmesser 3.500 kg
- Traglasten mit * gekennzeichnet, gelten nur mit Sonderausrüstung.
- Die angegebenen Traglastwerte dienen nur zur Orientierung. Die jeweils gültigen Traglastwerte entnehmen Sie bitte den Tabellen in der Betriebsanleitung

Specifications

Diesel engine

Output	135 kW/184 HP at 2000 rpm
Model	Deutz TCD 2012 L06 2V -TIER III
Direct injection, turbo charged, intercooler, reduced emission	
Cooling	Water cooled
Air filter	Dry air filter with precleaner, automatic dust Discharge, main and safety element, pollution indicator
Fuel tank	300 l
Electric system	24 Volt
Batteries	2 x 110 Ah, main switch

Hydraulic system

load sensing/LUDV system for working functions and drive function

Hydraulic pump Variable displacement piston pump, swashplate type, load sensing regulation for parallel, independent operation of the working functions

Pump regulation Zero-flow regulation, flow on demand control - the pumps only supplying the required oil, pressure cut off

Oil flow max. **280 l/min**

Pressure max. **330 bar**

Separate hydraulic circuit for swing operation

Pump type Gear pump

Oil flow max. **35 l/min**

Pressure max. **240 bar**

Filtration High-efficiency filtration with long-time change interval, SENNEBOGEN HydroClean micro filtration with water separation, optional

Cooling Large-sized cooling unit

Hydraulic tank **440 l**

Steering Proportional, hydraulically and precise control of the hydraulic functions, 2 servo joysticks for operating movements, additional functions through switches and foot pedals

Safety valves for all hydraulic circuits

High efficiency through well designed hydraulic valves and lines.

Pressure accumulator for lowering of attachments when engine turned off

Central pressure test ports

Safety check valves for boom cylinders

Safety check valves for telescopic boom cylinders

Swing drive

Compact planetary reduction gear with hydraulic piston motor, integrated brake valves

Parking brake Multi-disc brake, spring-loaded

Swing bearing Strong ball bearing, sealed

Swing speed 0-2 rpm, stepless

Upper carriage

Design Torsion resistant box type design precision machined, steel bushes for the boom pivot.
Clear, very servicefriendly design longitudinal installation of the engine

Cooling system

Compact 3 circuit cooling system, large sized

Working equipment

Design Decades of experience and state-of-the-art computer simulation guarantee highest stability and durability

Telescopic boom 4-section telescopic boom, full power hydraulically extendable, 23.4 m or 30 m

Folding jib 6.5 m or 13 m length, fast and easy erection, while not using it can be folded at the side of the mainboom

Hoist winch Axial piston hydraulic motor, planetary gear, linepul (1st layer), 40 kN, line speed 0-95 m/min, rope dia. 14 mm, 2. hoist winch optional

Safety brake Spring applied multi disc brake

Crane safety State-of-the-art safe load indicator with colour graphic display, hoist limit switch, rope limit switch, pressure relief and safety check valves

Cylinders Hydraulic cylinders with high-grade seal and guide system

Undercarriage

Design Very strong, hydraulically extendable crawler undercarriage with integrated, protected drives

Drive system High traction force through 2 speed variable displacement piston motors with directly mounted automatic brake valves and planetary gears at each track side

Parking brake Multi-disc brake, spring loaded

Tracks Maintenance free track type with hydraulic track tensioning system, triple grouser shoes. Flat shoes optional

Travel speed 0-1.2 / 0-2.7 km/h

Operating weight

643 R with telescopic boom 30 m, jib 13 m and hook block 20t, 700 mm triple bar shoes

with counterweight 5,4 t

approx. 36,900 kg

with counterweight 7 t + 4 t

approx. 42,500 kg

Operating weight may vary with different equipment and attachments. Subject to technical modification!